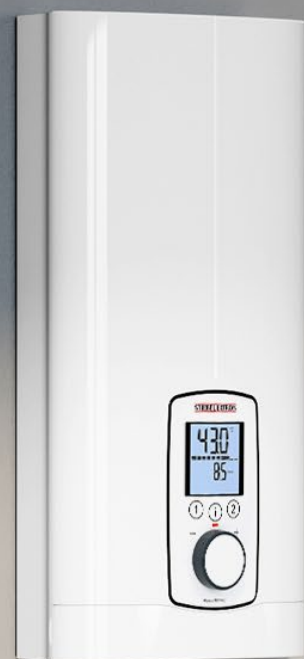


# STIEBEL ELTRON

## DHE AU

Hot water delivered with precision  
through reliable 3 phase technology



## DHE AU

### 3 PHASE ELECTRIC INSTANTANEOUS

#### Hot water delivered with precision

The DHE AU instant water heaters deliver hot water with precision. Comfort is the number one priority as the DHE 18 AU and DHE 27 AU deliver hot water exactly to the degree. Utilising 4i Technology, the intelligent fully-electronic water heater compensates for fluctuations in pressure and temperature and using its series of sensors it precisely regulates the hot water output. This ensures that you get your requested hot water temperature to the degree.

#### Product features

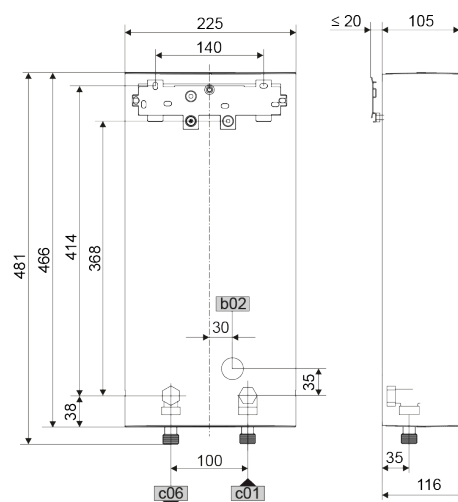
- › Accurate temperature delivery at all times from 20 °C to 60 °C thanks to 4i technology
- › Made in Germany
- › Quick temperature memory buttons
- › ECO function for saving water and energy
- › The display shows the current water and energy consumption



Type		DHE 18 AU	DHE 27 AU
Article no.		202658	202659
Rated output (415 V)	kW	19.4	28
Rated current (415 V)	A	27	38.9
Connection		3/PE	3/PE
Fuse protection	A	32	40
Electrical installation	As per AS/NZS3000		
Installation requirements	AS/NZS3500.4.2 & local requirements		
Switch on flow rate	L/min	2.5	2.5
Temperature settings		Off, 20-60	Off, 20-60
Water connection		G 1/2 A	G 1/2 A
Max. permissible pressure	kPa	1000	1000
Max. inlet temperature for reheating	°C	55	55
IP rating		IP25	IP25
Height	mm	466	466
Width	mm	225	225
Depth	mm	116	116
Weight	kg	4.5	4.5
Colour		White	White
Approvals		WaterMark Lic No. WMKA00301. AS3498	

Temperature Rise (415 V)	DHE 18 AU	DHE 27 AU
6 L/min	+46 °C	–
8 L/min	+34 °C	+52 °C
10 L/min	+27 °C	+41 °C
12 L/min	+23 °C	+34 °C
14 L/min	+19 °C	+29 °C

#### Dimensions



#### Dimensions and Connections

In-wall or bottom entry connection available.



#### Calculating Output Water Temperature

Add the temperature rise values on the left to your incoming cold water temperature to calculate output at a desired flow rate.

#### Seasonal Average Cold Water Temperatures

Melbourne: 15 °C

Sydney/Brisbane/Perth/Adelaide: 18 °C

Canberra/Hobart: 14 °C

Townsville/Darwin: 25 °C